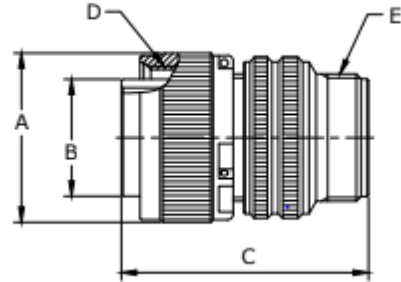


SPEC SHEET



MIL-DTL-5015 Type Connectors
 Straight Plug (MS3106)
 Class "A"
 Insert Layouts as per MIL-DTL-5015



Part#	A Dia Max	B Dia +0.00 - 0.38	C Max	D. Thread (Class: 28)	E: Thread (Class: 2A)
MS3106A10SL-xxxx	24.61	11.33	38.88	5/8-24UNEF	5/8-24UNEF
MS3106A12S-xxxx	26.97	14.1	42.87	3/4-20UNEF	5/8-24UNEF
MS3106A12-xxxx	26.97	14.1	52.37	3/4-20UNEF	5/8-24UNEF
MS3106A14S-xxxx	29.36	17.15	42.87	7/8-20UNEF	3/4-20UNEF
MS3106A14-xxxx	29.36	17.15	52.37	7/8-20UNEF	3/4-20UNEF
MS3106A16S-xxxx	31.75	20.45	42.87	1-20UNEF	7/8-20UNEF
MS1606A16-xxxx	31.75	20.45	52.37	1-20UNEF	7/8-20UNEF
MS3106A18-xxxx	34.13	23.62	52.37	1 1/8-18UNEF	1-20UNEF
MS3106A20-xxxx	37.31	26.67	55.57	1 1/4-18UNEF	1 3/16-18UNEF
MS3106A22-xxxx	40.48	29.85	55.57	1 3/8-18UNEF	1 3/16-18UNEF
MS3106A24-xxxx	43.66	33.02	58.72	1 1/2-18UNEF	1 7/16-18UNEF
MS3106A28-xxxx	50.01	38.61	58.72	1 3/4-18UNS	1 7/16-18UNEF
MS3106A32-xxxx	56.36	44.96	61.92	2-18-UNS	1 3/4-18UNS
MS3106A36-xxxx	62.71	50.29	61.92	2 1/4-16UN	2-18UNS

above dimensions in mm

Finish	
Blank - Conductive Olive Drab Chromate Over Cadmium or Zinc Plate	
01	Black Anodize
02	Electroless Nickel Plate
03	Black Zinc Cobalt Plate* Standard MRO Stock

for other platings please contact Sales

MRO ELECTRONIC SUPPLY LTD.

Contact MRO for more information at (403)291-0501
sales@mroelectronics.com